



## Schoolfield Way, Grays

**£1,085 pcm**

**LET**

Ali & Co are delighted to present this fantastic GROUND FLOOR ONE BEDROOM APARTMENT a very spacious part furnished apartment.

Available Now.

**01375 806786**

[hello@aliandcoproperty.co.uk](mailto:hello@aliandcoproperty.co.uk)

**Ali&Co**  
PROPERTY SERVICES



## STUNNING ONE BEROOM APARTMENT

The property offers excellent accommodation with a spacious lounge with access to balcony, open plan kitchen area with a custom made kitchen island. the kitchen benefits from having integrated appliances. Newly installed bathroom suite, fully furnished bedroom with new mattress.

The property is located in a prime location with easy access to all amenities and transport with Lakeside within walking distance. The property is available now on a long term let.

Please call Ali & Co to arrange a viewing.

Council Tax Band: B (Thurrock Council)  
Deposit: £1,085

### Living room

Spacious lounge with access to balcony, open plan kitchen separated with a custom made kitchen island.

### Kitchen

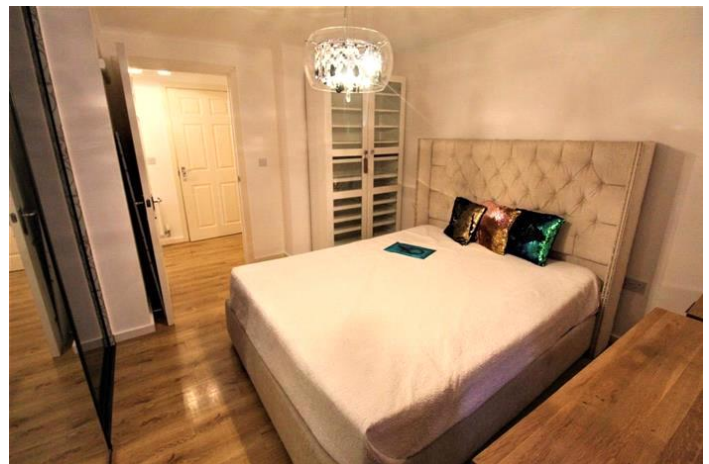
Fully fitted kitchen integrated appliances, with track lighting plenty of storage with a separate custom made kitchen island. Oven Hob, Fridge Freezer, washing machine and dishwasher included.

### Bedroom 1

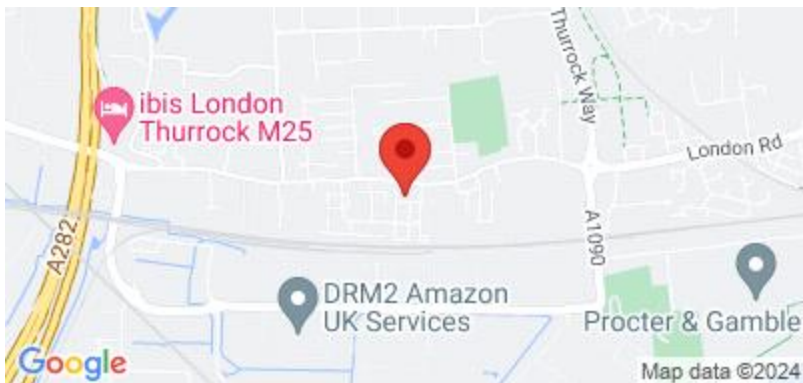
Furnished bedroom with Bed and new mattress fitted sliding door wardrobe and draw units.

### Bathroom

Family bathroom newly renovated with a new bath tub and shower screen, and white bathroom units.







Energy Efficiency Rating		
	Current	Potential
Very energy efficient - lower running costs		
(92-100) <b>A</b>		
(81-91) <b>B</b>		
(69-80) <b>C</b>	79	80
(55-68) <b>D</b>		
(39-54) <b>E</b>		
(21-38) <b>F</b>		
(1-20) <b>G</b>		
Not energy efficient - higher running costs		
<b>England &amp; Wales</b>	EU Directive 2002/91/EC	

The energy efficiency rating is a measure of the overall efficiency of a home. The higher the rating the more energy efficient the home is and the lower the fuel bills will be.

Whilst every effort is made to ensure the accuracy of these details, it should be noted that the measurements are approximate only. Floorplans are for representation purposes only and prepared according to the RICS Code of Measuring Practice by our floorplan provider. Therefore, the layout of doors, windows and rooms are approximate and should be regarded as such by any prospective tenant.