



Moore Avenue, Grays

£1,375 pcm

LET

Ali & Co are delighted to have on offer this fantastic THREE BEDROOM FAMILY HOME. Spacious Lounge/Diner and a separate spacious kitchen.

Cloakroom | Conservatory | Double Glazing | Off-street parking | Three Bedrooms | Town Centre Location | Separate Kitchen | Drive Way

01375 806786

hello@aliandcoproperty.co.uk

Ali&Co
PROPERTY SERVICES

THREE BEDROOM FAMILY HOME

Ali & Co are delighted to have on offer this fantastic THREE BEDROOM FAMILY HOME.

Spacious Lounge/Diner and a separate spacious kitchen.

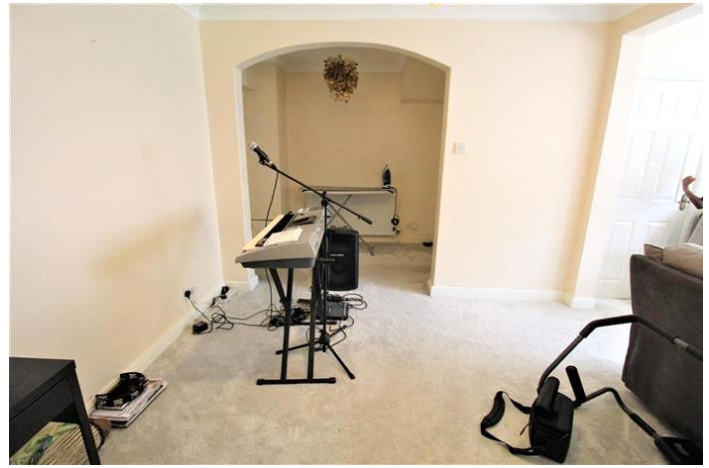
This property offers fantastic living space with Three very good size bedrooms and off street private parking.

Located very close to Grays Town Centre and all local amenities.

Available immediately.

Council Tax Band: C (Thurrock Council)

Deposit: £1,375







Energy Efficiency Rating		
	Current	Potential
Very energy efficient - lower running costs		100
(92-100) A		
(81-91) B		
(69-80) C		
(55-68) D	68	
(39-54) E		
(21-38) F		
(1-20) G		
Not energy efficient - higher running costs		
England & Wales	EU Directive 2002/91/EC	

The energy efficiency rating is a measure of the overall efficiency of a home. The higher the rating the more energy efficient the home is and the lower the fuel bills will be.

Whilst every effort is made to ensure the accuracy of these details, it should be noted that the measurements are approximate only. Floorplans are for representation purposes only and prepared according to the RICS Code of Measuring Practice by our floorplan provider. Therefore, the layout of doors, windows and rooms are approximate and should be regarded as such by any prospective tenant.