

## Penthouse 2 Southend Road, Grays

**£795 pcm**

Ali & Co present this professional co-living home with luxury open plan lounge/kitchen access to two bathrooms and a laundry room.

Situated above tesco and within close proximity of Grays Town Centre and transport links.

Available to move in immediately.

ABOVE TESCO | CLOSE TO TOWN | CO-LIVING | DOUBLE GLAZED | FULLY FURNISHED | LUXURY LOUNGE KITCHEN | TWO SHARED BATHROOMS | WEEKLY CLEANING |

**01375 806786**

hello@aliandcoproperty.co.uk

**Ali&Co**  
PROPERTY SERVICES

## CO LIVING IN THURROCK

Ali & Co present this professional co-living home with luxury open plan lounge/kitchen access to two bathrooms and a laundry room. Situated above tesco and within close proximity of Grays Town Centre and transport links.

Available to move in immediately.

Council Tax Band: C (Thurrock Council)

Deposit: £600

### Bathroom

Spacious bathroom with bath tub

### Bathroom

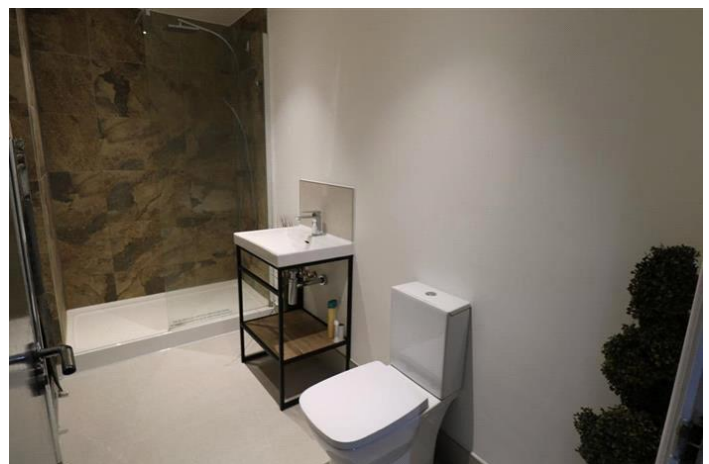
Spacious Shower Room

### Living room

Fully furnished for all guests to use

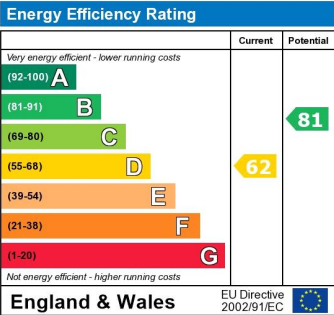
### Bedroom 1

Large room with all furniture









Whilst every effort is made to ensure the accuracy of these details, it should be noted that the measurements are approximate only. Floorplans are for representation purposes only and prepared according to the RICS Code of Measuring Practice by our floorplan provider. Therefore, the layout of doors, windows and rooms are approximate and should be regarded as such by any prospective tenant.