



## St. Stephens Crescent, Chadwell St. Mary, Grays

**£1,700 pcm** **LET AGREED**

Ali & Co are delighted to present to the market this lovely three bedroom house in Chadwell St Mary, RM16.

Allocated parking | Available Now | Double Glazing | Gas Central Heating | Landscaped Garden | Three Bedroom Home |

**01375 806786**

hello@aliandcoproperty.co.uk

**Ali&Co**  
PROPERTY SERVICES

## STUNNING THREE BEDROOM FAMILY HOME

Ali & Co are delighted to present to the market this lovely three bedroom house in Chadwell St Mary, RM16.

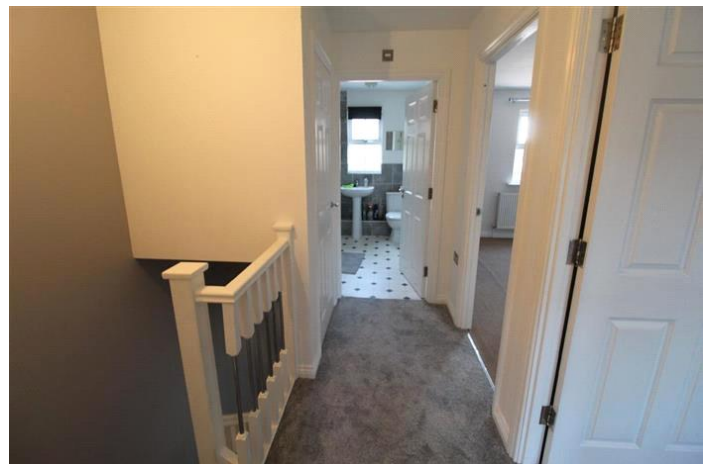
The property offers fantastic accommodation with Two Double Bedrooms, Single Bedroom, family bathroom, great size kitchen, large lounge with access to a decked garden. Parking available at the front of the house.

Very well located in a new build estate, close to all local amenities and transport, a fantastic family home.

Available from the 9th of February, give us a call today to book your viewing!

Council Tax Band: D (Thurrock Council)

Deposit: £1,700









Energy Efficiency Rating		
	Current	Potential
Very energy efficient - lower running costs		
(92-100) <b>A</b>		
(81-91) <b>B</b>		<b>90</b>
(69-80) <b>C</b>	<b>78</b>	
(55-68) <b>D</b>		
(39-54) <b>E</b>		
(21-38) <b>F</b>		
(1-20) <b>G</b>		
Not energy efficient - higher running costs		
<b>England &amp; Wales</b>	EU Directive 2002/91/EC	

The energy efficiency rating is a measure of the overall efficiency of a home. The higher the rating the more energy efficient the home is and the lower the fuel bills will be.

Whilst every effort is made to ensure the accuracy of these details, it should be noted that the measurements are approximate only. Floorplans are for representation purposes only and prepared according to the RICS Code of Measuring Practice by our floorplan provider. Therefore, the layout of doors, windows and rooms are approximate and should be regarded as such by any prospective tenant.