

## London Road, Grays

**£1,575 pcm**

**LET**

Ali & Co are delighted to bring to the market this semi-detached THREE BEDROOM family home Located on London Road West Thurrock.

Available to view now | Close Proximity To Lakeside Shopping Centre | Close to schools | Large Drive | No Onward Chain | Three Bedroom Home |

**01375 806786**

hello@aliandcoproperty.co.uk

**Ali&Co**  
PROPERTY SERVICES

## THREE BEDROOM FAMILY HOME

Ali & Co are delighted to bring to the market this semi-detached THREE BEDROOM family home,  
Located on London Road West Thurrock.  
This property offers great accommodation with a large spacious front garden, entrance hall leading to a ground floor bathroom, spacious lounge and seperate kitcehn with sliding doors leading into the rear garden,  
First floor you have three great size bedrooms,  
Located in West thurrock being close to all local amenties and transport.  
Available to view immediately.

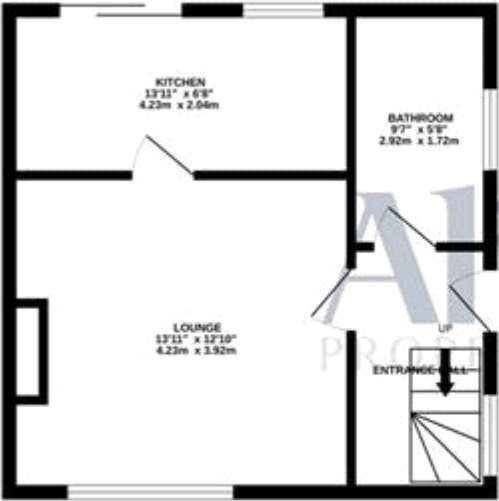
Council Tax Band: C (Thurrock Council)  
Deposit: £1,575  
Parking options: Off Street  
Garden details: Private Garden



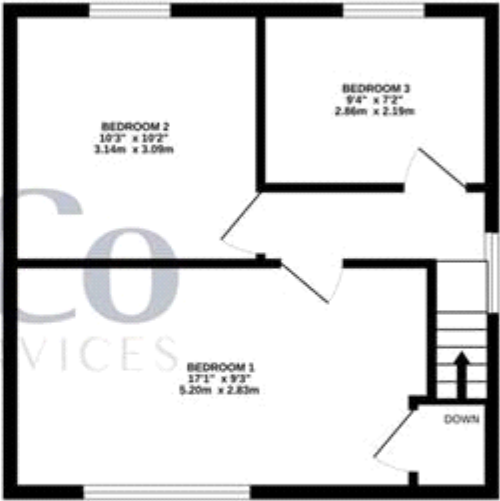




GROUND FLOOR  
382 sq.ft. (35.5 sq.m.) approx.



1ST FLOOR  
382 sq.ft. (35.5 sq.m.) approx.



TOTAL FLOOR AREA : 763 sq.ft. (70.9 sq.m.) approx.  
Whilst every attempt has been made to ensure the accuracy of the floorplan contained here, measurements of doors, windows, rooms and any other items are approximate and no responsibility is taken for any error, omission or mis-statement. This plan is for illustrative purposes only and should be used as such by any prospective purchaser. The services, systems and appliances shown have not been tested and no guarantee as to their operability or efficiency can be given.  
Made with Metropix ©2024



| Energy Efficiency Rating                    |         |                         |
|---|---------|-------------------------|
|   | Current | Potential               |
| Very energy efficient - lower running costs |         |                         |
| (92-100) <b>A</b>                           |         |                         |
| (81-91) <b>B</b>                            |         | 87                      |
| (69-80) <b>C</b>                            |         |                         |
| (55-68) <b>D</b>                            |         |                         |
| (39-54) <b>E</b>                            | 50      |                         |
| (21-38) <b>F</b>                            |         |                         |
| (1-20) <b>G</b>                             |         |                         |
| Not energy efficient - higher running costs |         |                         |
| England & Wales                             |         | EU Directive 2002/91/EC |

The energy efficiency rating is a measure of the overall efficiency of a home. The higher the rating the more energy efficient the home is and the lower the fuel bills will be.

Whilst every effort is made to ensure the accuracy of these details, it should be noted that the measurements are approximate only. Floorplans are for representation purposes only and prepared according to the RICS Code of Measuring Practice by our floorplan provider. Therefore, the layout of doors, windows and rooms are approximate and should be regarded as such by any prospective tenant.