



Howard Road, Upminster

£595,000 Freehold

Ali & Co are excited to welcome to the market this well presented TWO BEDROOM charming and spacious SEMI DETACHED BUNGALOW , located in one of Upminster's most sought-after residential areas.

01375 806786

hello@aliandcoproperty.co.uk

Ali&Co
PROPERTY SERVICES

TWO BEDROOM SEMI-DETACHED BUNGALOW

Ali & Co are excited to welcome to the market this well presented TWO BEDROOM charming and spacious SEMI DETACHED BUNGALOW , located in one of Upminster's most sought-after residential areas.

LOCATION: Situated in the heart of Upminster, Howard Road is a quiet, tree-lined street known for its friendly community and attractive homes. The property is just a short walk from Upminster Station, offering fast C2C services to London Fenchurch Street and District Line access, making it ideal for commuters.

Families will appreciate the proximity to highly rated schools, including Coopers' Company and Coborn School, and the abundance of local parks, shops, and cafes. With easy access to the A127 and M25, this location combines suburban tranquility with excellent connectivity.

ACCOMODATION: This charming bungalow offers the perfect blend of comfort and convenience, all on one level. Ideal for those seeking easy living, the property features a spacious layout newly fitted modern kitchen complete with built in appliances, a contemporary Bathroom , and two good size bedrooms , the layout ensures accessibility throughout.

EXTERNALLY : The paved rear garden provides a peaceful retreat, perfect for entertaining or relaxing, while the front driveway offers convenient off-street including a garage giving access to the side of the property.

Council Tax Band: D

Tenure: Freehold

Parking options: Driveway

Garden details: Rear Garden

Electricity supply: Mains

Heating: Gas Mains

Water supply: Mains

Sewerage: Mains

Bedroom 1

w: 3.2m x l: 4.47m (w: 10' 6" x l: 14' 8")

Bedroom 2

w: 2.6m x l: 2.7m (w: 8' 6" x l: 8' 10")

Lounge

w: 3.2m x l: 3.37m (w: 10' 6" x l: 11' 1")

Kitchen/diner

w: 2.7m x l: 3.5m (w: 8' 10" x l: 11' 6")

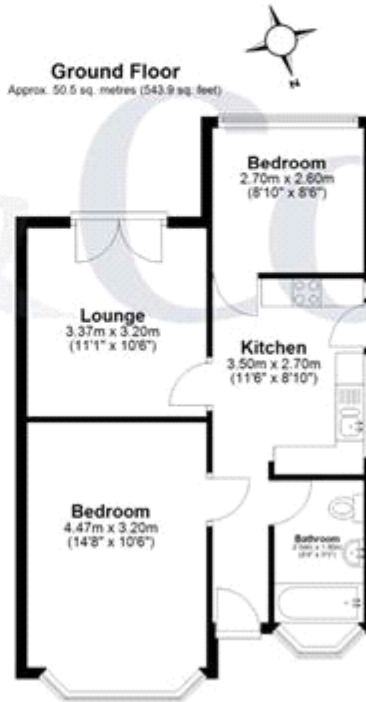




Outbuilding
Approx. 18.9 sq. metres (203.9 sq. feet)



Ground Floor
Approx. 50.5 sq. metres (543.9 sq. feet)



Total area: approx. 69.5 sq. metres (747.8 sq. feet)
Howard Road



Energy Efficiency Rating		
	Current	Potential
Very energy efficient - lower running costs		
(92-)	59	89
A		
(81-91)		
B		
(69-80)		
C	59	89
(55-68)		
D		
(39-54)		
E		
(21-38)	59	89
F		
(1-20)		
G		
Not energy efficient - higher running costs		
England & Wales		
EU Directive 2002/91/EC		

The energy efficiency rating is a measure of the overall efficiency of a home. The higher the rating the more energy efficient the home is and the lower the fuel bills will be.

Whilst every effort is made to ensure the accuracy of these details, it should be noted that the measurements are approximate only. Floorplans are for representation purposes only and prepared according to the RICS Code of Measuring Practice by our floorplan provider. Therefore, the layout of doors, windows and rooms are approximate and should be regarded as such by any prospective purchaser. Any internal photographs are intended as a guide only and it should not be assumed that any of the furniture/fitings are included in any sale. Where shown, details of lease, ground rent and service charge are provided by the vendor and their accuracy cannot be guaranteed, as the information may not have been verified and further checks should be made either through your solicitor/conveyance. Where appliances, including central heating, are mentioned, it cannot be assumed that they are in working order, as they have not been tested. Please also note that wiring, plumbing and drains have not been checked.