



Bermuda Road, Tilbury

£1,350 pcm

LET

Ali & Co are delighted to have on offer this newly refurbished THREE BEDROOM FAMILY HOME. Situated close to C2C Station and all local amenities.

Available Now | Close to schools | Close To Station | CLOSE TO TOWN | DOUBLE GLAZED | Gas Central Heating | Newly Carpeted | Newly Refurbished | Three Bedrooms |

01375 806786

hello@aliandcoproperty.co.uk

Ali&Co
PROPERTY SERVICES

THREE BEDROOM FAMILY HOME

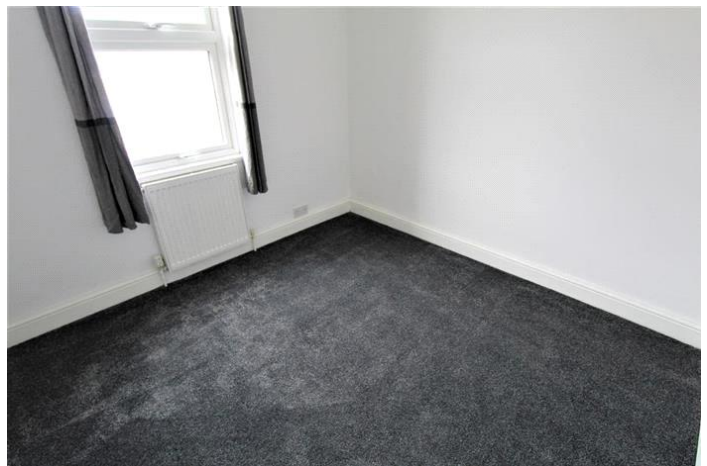
Ali & Co are delighted to have on offer this newly refurbished THREE BEDROOM FAMILY HOME.

Situated close to C2C station and all local amenities

The property offers fantastic living space with a spacious lounge, modern kitchen downstairs 4 piece bathroom, low maintenance garden, 3 very good size bedrooms, available to view now.

Deposit: £1,350

Garden details: Private Garden







Energy Efficiency Rating		
	Current	Potential
Very energy efficient - lower running costs		
(92-100) A		
(81-91) B		87
(69-80) C		
(55-68) D	64	
(39-54) E		
(21-38) F		
(1-20) G		
Not energy efficient - higher running costs		
England & Wales	EU Directive 2002/91/EC	

The energy efficiency rating is a measure of the overall efficiency of a home. The higher the rating the more energy efficient the home is and the lower the fuel bills will be.

Whilst every effort is made to ensure the accuracy of these details, it should be noted that the measurements are approximate only. Floorplans are for representation purposes only and prepared according to the RICS Code of Measuring Practice by our floorplan provider. Therefore, the layout of doors, windows and rooms are approximate and should be regarded as such by any prospective tenant.