



St. Stephens Crescent, Chadwell St. Mary, Grays

£1,700 pcm **LET AGREED**

Ali & Co are delighted to present to the market this lovely three bedroom house in Chadwell St Mary, RM16.

Allocated parking | Available Now | Double Glazing | Gas Central Heating | Landscaped Garden | Three Bedroom Home |

01375 806786
hello@aliandcoproperty.co.uk

Ali&Co
PROPERTY SERVICES

STUNNING THREE BEDROOM FAMILY HOME

Ali & Co are delighted to present to the market this lovely three bedroom house in Chadwell St Mary, RM16.

The property offers fantastic accommodation with Two Double Bedrooms, Single Bedroom, family bathroom, great size kitchen, large lounge with access to a decked garden. Parking available at the front of the house.

Very well located in a new build estate, close to all local amenities and transport, a fantastic family home.

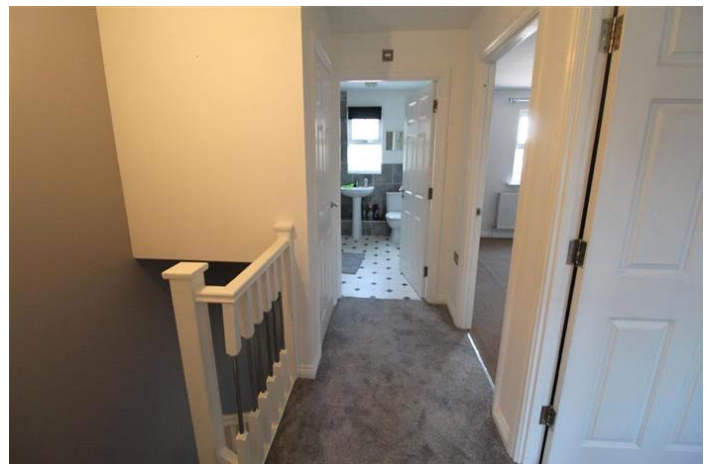
Available from the 9th of February, give us a call today to book your viewing!

Council Tax Band: D (Thurrock Council)

Deposit: £1,700

Parking options: Off Street

Garden details: Private Garden







Energy Efficiency Rating		
	Current	Potential
Very energy efficient - lower running costs		
(92-100) A		
(81-91) B		90
(69-80) C	78	
(55-68) D		
(39-54) E		
(21-38) F		
(1-20) G		
Not energy efficient - higher running costs		
England & Wales	EU Directive 2002/91/EC	

Whilst every effort is made to ensure the accuracy of these details, it should be noted that the measurements are approximate only. Floorplans are for representation purposes only and prepared according to the RICS Code of Measuring Practice by our floorplan provider. Therefore, the layout of doors, windows and rooms are approximate and should be regarded as such by any prospective tenant.