



Fanshawe Road, Grays

£1,650 pcm

LET

Ali & Co are delighted to present this fantastic THREE DOUBLE BEDROOM FAMILY HOME TO LET.

Available to view now | Double Glazing | Drive Way | Gas Central Heating | Two Reception Rooms | Three Double Bedrooms |

01375 806786

hello@aliandcoproperty.co.uk

Ali&Co
PROPERTY SERVICES

THREE BEDROOM FAMILY HOME

Ali & Co are delighted to present this fantastic THREE DOUBLE BEDROOM FAMILY HOME TO LET.

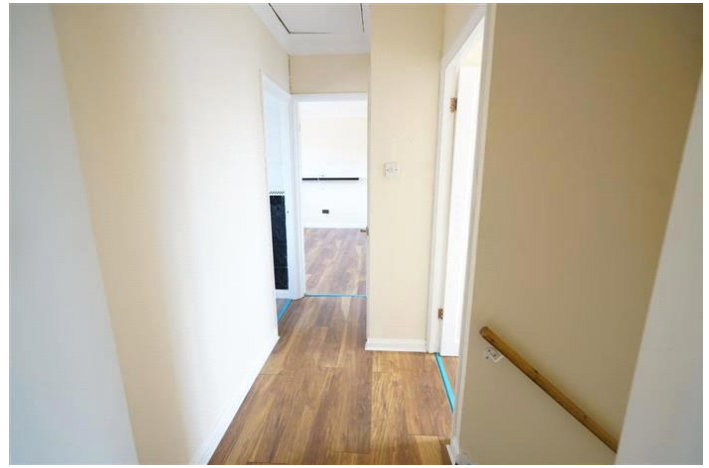
The property is very well positioned in Chadwell St Mary offering exceptional living accommodation with a spacious lounge with double doors leading into the garden, dining room with access to a very good size kitchen and ground floor WC.

Council Tax Band: C (Thurrock Council)

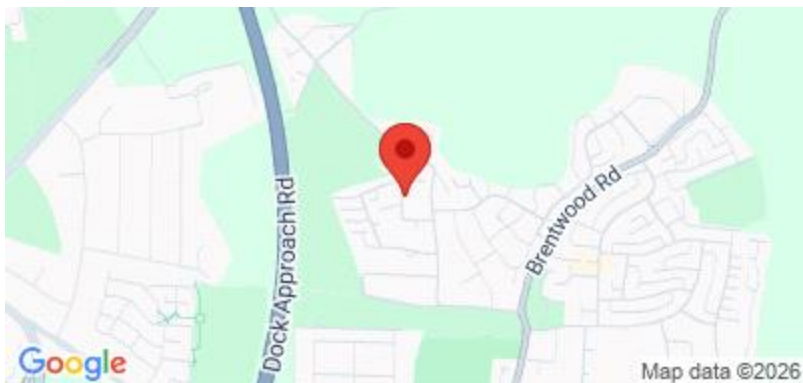
Deposit: £1,650

Parking options: Off Street

Garden details: Private Garden







Energy Efficiency Rating		
	Current	Potential
Very energy efficient - lower running costs		
(92-100) A		
(81-91) B		81
(69-80) C		
(55-68) D	65	
(39-54) E		
(21-38) F		
(1-20) G		
Not energy efficient - higher running costs		
England & Wales	EU Directive 2002/91/EC	

The energy efficiency rating is a measure of the overall efficiency of a home. The higher the rating the more energy efficient the home is and the lower the fuel bills will be.

Whilst every effort is made to ensure the accuracy of these details, it should be noted that the measurements are approximate only. Floorplans are for representation purposes only and prepared according to the RICS Code of Measuring Practice by our floorplan provider. Therefore, the layout of doors, windows and rooms are approximate and should be regarded as such by any prospective tenant.