



## Francisco Close, Chafford Hundred, Grays

**£1,950 pcm**

**LET**

Ali & Co are delighted to present this amazing Three Bedroom Detached Family Home located within walking distance to Chafford Hundred C2C Station.

Available to view now | Detached Home | Dining Room | Driveway | Ensuite Bathroom | Family Home | Garden | Three Bedroom Home |

**01375 806786**

hello@aliandcoproperty.co.uk

**Ali&Co**  
PROPERTY SERVICES

## STUNNING FAMILY HOME

Ali & Co are delighted to present this amazing Three Bedroom Detached Family Home located within walking distance to Chafford Hundred C2C Station.

The property offers excellent accommodation with a great size kitchen, dining room, spacious lounge, with access to rear garden and patio area, first floor you are presented with a master ensuite bedroom with fitted wardrobes, two other bedrooms and a family bathroom, great size family home, close to all local amenities and transport.

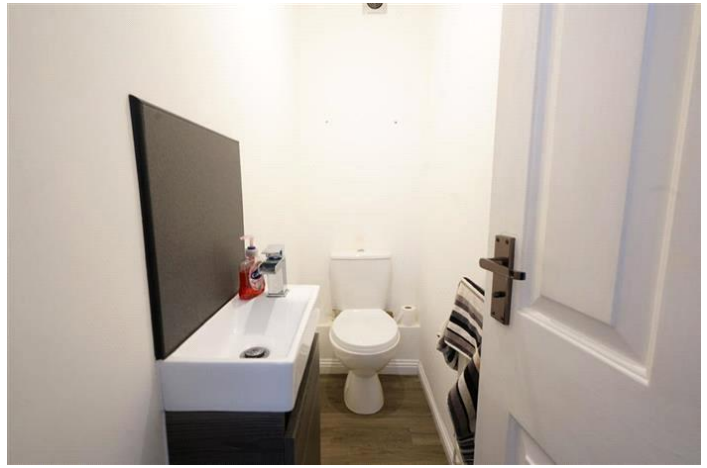
internal viewings highly recommended  
Contact Ali & Co to arrange a viewing.

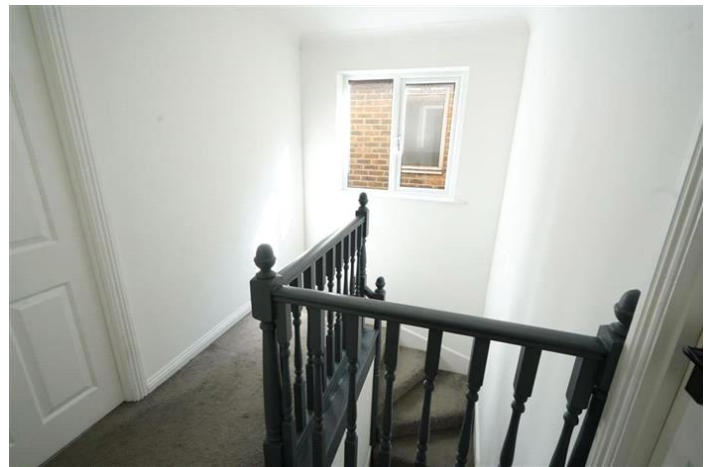
Council Tax Band: E (Thurrock Council)

Deposit: £1,950

Parking options: Driveway

Garden details: Rear Garden







Energy Efficiency Rating		
	Current	Potential
Very energy efficient - lower running costs		
(92+) <b>A</b>		
(81-91) <b>B</b>		
(69-80) <b>C</b>		
(55-68) <b>D</b>		
(39-54) <b>E</b>		
(21-38) <b>F</b>		
(1-20) <b>G</b>		
Not energy efficient - higher running costs		
	72	77
England & Wales	EU Directive 2002/91/EC	

The energy efficiency rating is a measure of the overall efficiency of a home. The higher the rating the more energy efficient the home is and the lower the fuel bills will be.

Whilst every effort is made to ensure the accuracy of these details, it should be noted that the measurements are approximate only. Floorplans are for representation purposes only and prepared according to the RICS Code of Measuring Practice by our floorplan provider. Therefore, the layout of doors, windows and rooms are approximate and should be regarded as such by any prospective tenant.