



Timber Court, Grays

£199,000 Leasehold

Ali & Co are delighted to bring to the market this ONE BEDROOM APARTMENT with a long leasehold of 927 years remaining.

Located in a prime estate close to Grays Town Centre And C2C Station.

Close to schools, shops & transport links | Allocated Parking | Available to view now | CHAIN FREE | Close to Town Centre | Long Lease |

01375 806786

hello@aliandcoproperty.co.uk

Ali&Co
PROPERTY SERVICES

STUNNING ONE BEDROOM APARTMENT FOR SALE

Ali & Co are delighted to bring to the market this impressive ONE BEDROOM APARTMENT, offering an outstanding 927 years remaining on the lease—a rare and valuable benefit for any buyer seeking long-term security and minimal ground rent obligations.

Located within the popular and well-maintained Timber Court development, this property is perfectly positioned for convenience, comfort, and excellent transport links. The apartment sits within a desirable residential estate just a short distance from Grays Town Centre, where a wide range of shops, cafés, supermarkets, and local amenities can be found.

Commuters will particularly appreciate the close proximity to Grays C2C Station, providing fast and direct services into London Fenchurch Street, making this home an ideal choice for professionals and London-bound travellers.

Property Highlights:

A bright and spacious one-bedroom apartment with a well-designed layout

Fantastic 927-year lease, offering long-term peace of mind

Located within the highly sought-after Timber Court estate

Modern fitted kitchen and generous living area

Good-sized double bedroom with ample storage potential

Well-presented bathroom

Secure entry system and well-kept communal areas

Allocated or nearby parking

Ideal for first-time buyers, downsizers, and buy-to-let investors

The apartment offers an excellent blend of modern living and practicality. With its bright interiors, welcoming atmosphere, and unbeatable location, this home represents a fantastic opportunity for anyone looking to secure a stylish property in the heart of Grays.

Location Benefits:

Walking distance to Grays Town Centre

Close to C2C Station with quick access to London

Near local parks, leisure facilities, and riverside walks

Within easy reach of major road links including A13 & M25

This property truly stands out for its exceptional lease length, convenient setting, and overall value. Early viewing is highly recommended to fully appreciate everything this superb apartment has to offer.

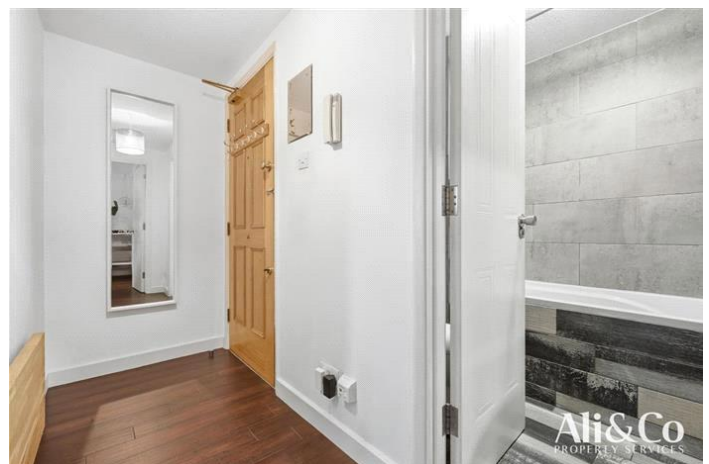
Council Tax Band: B (Thurrock Council)

Tenure: Leasehold (972 years)

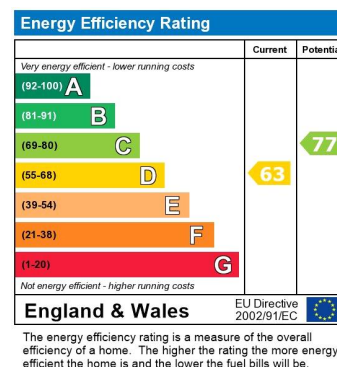
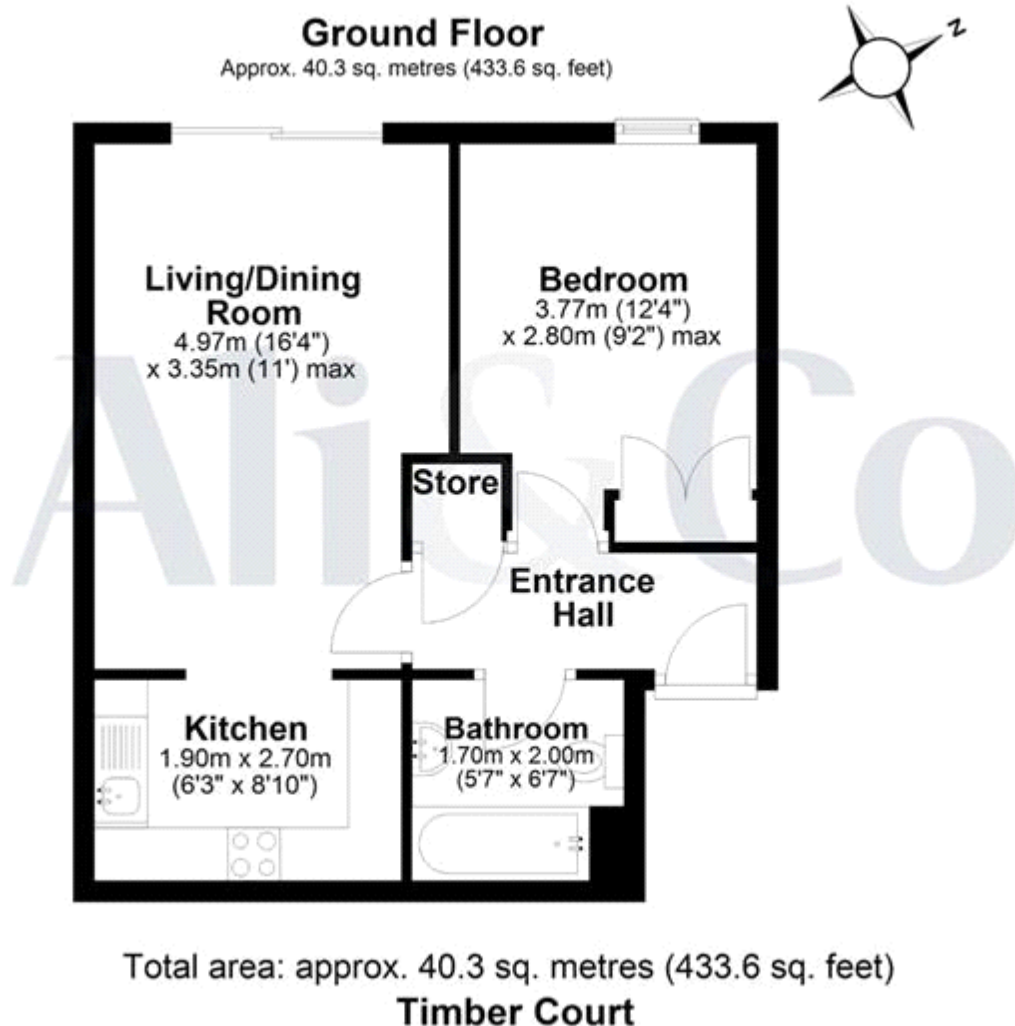
Ground Rent: £145 per year

Service Charge: £1,688 per year

Parking options: Off Street







Whilst every effort is made to ensure the accuracy of these details, it should be noted that the measurements are approximate only. Floorplans are for representation purposes only and prepared according to the RICS Code of Measuring Practice by our floorplan provider. Therefore, the layout of doors, windows and rooms are approximate and should be regarded as such by any prospective purchaser. Any internal photographs are intended as a guide only and it should not be assumed that any of the furniture/fittings are included in any sale. Where shown, details of lease, ground rent and service charge are provided by the vendor and their accuracy cannot be guaranteed, as the information may not have been verified and further checks should be made either through your solicitor/conveyance. Where appliances, including central heating, are mentioned, it cannot be assumed that they are in working order, as they have not been tested. Please also note that wiring, plumbing and drains have not been checked.