



## Leicester Road, Tilbury

**£3,750 pcm**

Ali & Co are pleased to present this fully licensed HMO property, newly refurbished throughout and ideally configured for Care Operators seeking compliant, ready-to-operate accommodation.

Available Now | Close to Shops | Close To Station | HMO Ready Property | Care Home Option | Care Operators | Double Glazing | Ensuite Bathroom | Fire Alarm System |

**01375 806786**

[hello@aliandcoproperty.co.uk](mailto:hello@aliandcoproperty.co.uk)

**Ali&Co**  
PROPERTY SERVICES

## CARE HOME TO LET

Located on Leicester Road, the property benefits from close proximity to local amenities, healthcare services, and strong transport links — providing convenience for residents, staff, and visiting professionals.

The property offers well-proportioned accommodation arranged to support supported living or care-based operations (subject to operator-specific requirements and regulatory approval). The layout comprises:

Multiple generously sized ensuite bedrooms

Additional main bathroom facilities

A fully equipped commercial-style kitchen

Spacious communal dining and living areas

Well-maintained circulation space suitable for shared living environments

The recent renovation has been completed to a high standard, creating a clean, modern and practical environment designed to support resident wellbeing, dignity and privacy.

The property holds a current HMO licence and presents an excellent opportunity for care providers looking to expand or establish a supported living or residential care setting (subject to CQC registration and any necessary local authority consents).

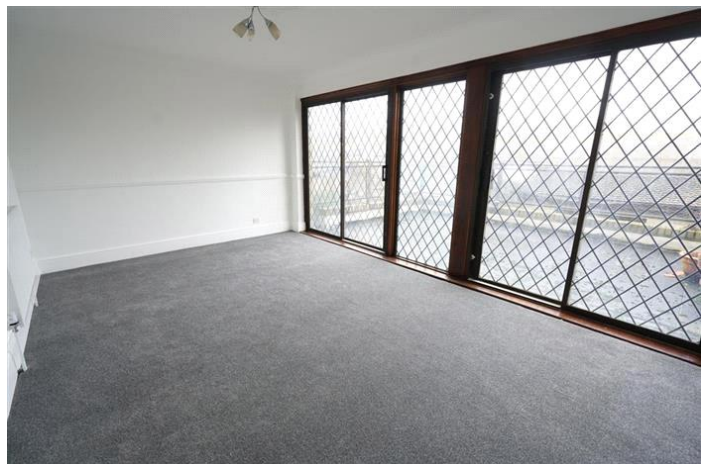
Early internal viewing is strongly recommended to fully appreciate the layout, condition and operational potential of this property.

Council Tax Band: C (Thurrock Council)

Deposit: £3,750

Parking options: Driveway

Garden details: Rear Garden









Energy Efficiency Rating		
	Current	Potential
Very energy efficient - lower running costs		
(92+) <b>A</b>		
(81-91) <b>B</b>		<b>83</b>
(69-80) <b>C</b>	<b>71</b>	
(55-68) <b>D</b>		
(39-54) <b>E</b>		
(21-38) <b>F</b>		
(1-20) <b>G</b>		
Not energy efficient - higher running costs		
<b>England &amp; Wales</b>	EU Directive 2002/91/EC	

The energy efficiency rating is a measure of the overall efficiency of a home. The higher the rating the more energy efficient the home is and the lower the fuel bills will be.

Whilst every effort is made to ensure the accuracy of these details, it should be noted that the measurements are approximate only. Floorplans are for representation purposes only and prepared according to the RICS Code of Measuring Practice by our floorplan provider. Therefore, the layout of doors, windows and rooms are approximate and should be regarded as such by any prospective tenant.