



## Cedar Road, Grays

**£675 pcm**

Ali & Co are pleased to present this newly developed house share, featuring six individual rooms, each with its own private en-suite shower room.

100gb Internet | 6 Bedrooms | All Bills Included | Double glazing & gas central heating | Ensuite Shower | House Share | Newly Refurbished | Off-street parking | Available to view now |

**01375 806786**

hello@aliandcoproperty.co.uk

**Ali&Co**  
PROPERTY SERVICES

## Ensuite Bedroom Available to rent

Located on Cedar road the property is very well located close to amenities and transport links.

The property offers a fantastic space with communal lounge, communal garden, off street parking, double ensuite rooms, communal kitchen, laundry area.

Decorated to a very high standard

Bedroom 1 Ensuite Furnished £795

Bedroom 2 Ensuite Furnished £795

Bedroom 3 Ensuite Furnished £825

Bedroom 4 Own Bathroom Furnished £725

Bedroom 5 Ensuite Furnished £725

Bedroom 6 Ensuite Bathroom £795

Hi speed broadband and bills inclusive.

Contact us today to arrange a viewing.

Council Tax Band: C (Thurrock Council)

Deposit: £775

Parking options: Driveway, Residents

Garden details: Communal Garden, Rear Garden

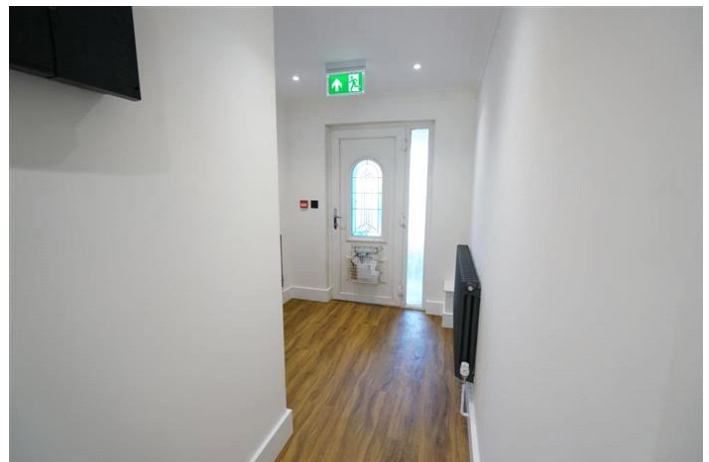
Electricity supply: Mains

Heating: Gas Mains

Water supply: Mains

Sewerage: Mains

Broadband: Cable







Energy Efficiency Rating		
	Current	Potential
Very energy efficient - lower running costs		
(92+) <b>A</b>		
(81-91) <b>B</b>		
(69-80) <b>C</b>	77	81
(55-68) <b>D</b>		
(39-54) <b>E</b>		
(21-38) <b>F</b>		
(1-20) <b>G</b>		
Not energy efficient - higher running costs		
<b>England &amp; Wales</b>	EU Directive 2002/91/EC	

The energy efficiency rating is a measure of the overall efficiency of a home. The higher the rating the more energy efficient the home is and the lower the fuel bills will be.

Whilst every effort is made to ensure the accuracy of these details, it should be noted that the measurements are approximate only. Floorplans are for representation purposes only and prepared according to the RICS Code of Measuring Practice by our floorplan provider. Therefore, the layout of doors, windows and rooms are approximate and should be regarded as such by any prospective tenant.