



Lewes Close, Grays

£1,025 pcm

Ali & Co are delighted to present to the market this well presented one bedroom ground floor apartment, ideally located in Lewes Close, Grays.

One-bedroom ground floor apartment | Walking distance to Grays C2C station | Situated in a peaceful cul-de-sac | Popular residential location in Grays |

01375 806786

hello@aliandcoproperty.co.uk

Ali&Co
PROPERTY SERVICES

Ground Floor ONE Bedroom Apartment To Let

Set within a peaceful cul-de-sac just moments from the riverside, this well presented ground floor one bedroom apartment, provides an excellent blend of comfort, convenience, and lifestyle appeal. The property is well maintained throughout, while its position slightly set back from the river offers privacy alongside attractive surroundings.

The location is a standout feature, with Grays C2C train station just a short walk away, providing direct links into London Fenchurch Street and making the property ideal for commuters. Nearby riverside footpaths and green spaces offer enhancing the tranquil feel of the area while keeping local amenities and transport links close by.

An excellent opportunity not to be missed, contact Ali & Co today to arrange your viewing.

Council Tax Band: A (Thurrock Council)

Deposit: £1,025

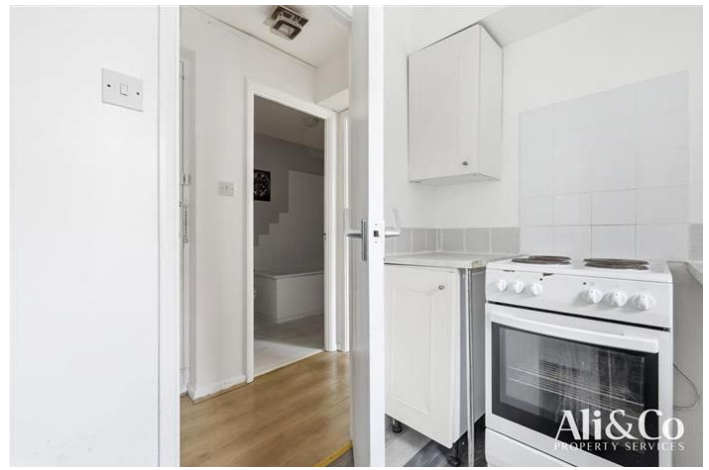
Parking options: Residents

Electricity supply: Mains

Heating: Electric

Water supply: Mains

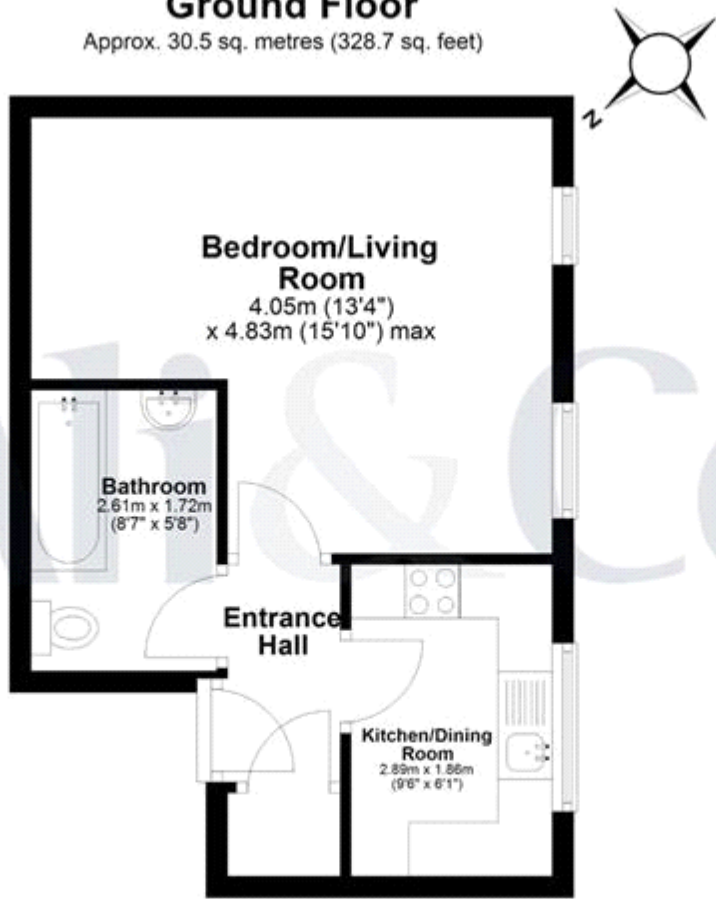
Sewerage: Mains





Ground Floor

Approx. 30.5 sq. metres (328.7 sq. feet)



Total area: approx. 30.5 sq. metres (328.7 sq. feet)

Lewes Close



Energy Efficiency Rating		
	Current	Potential
Very energy efficient - lower running costs		
(92+) A		
(81-91) B		
(69-80) C		
(55-68) D		
(39-54) E		
(21-38) F		
(1-20) G		
Not energy efficient - higher running costs		
	71	78

England & Wales EU Directive 2002/91/EC

The energy efficiency rating is a measure of the overall efficiency of a home. The higher the rating the more energy efficient the home is and the lower the fuel bills will be.

Whilst every effort is made to ensure the accuracy of these details, it should be noted that the measurements are approximate only. Floorplans are for representation purposes only and prepared according to the RICS Code of Measuring Practice by our floorplan provider. Therefore, the layout of doors, windows and rooms are approximate and should be regarded as such by any prospective tenant.